



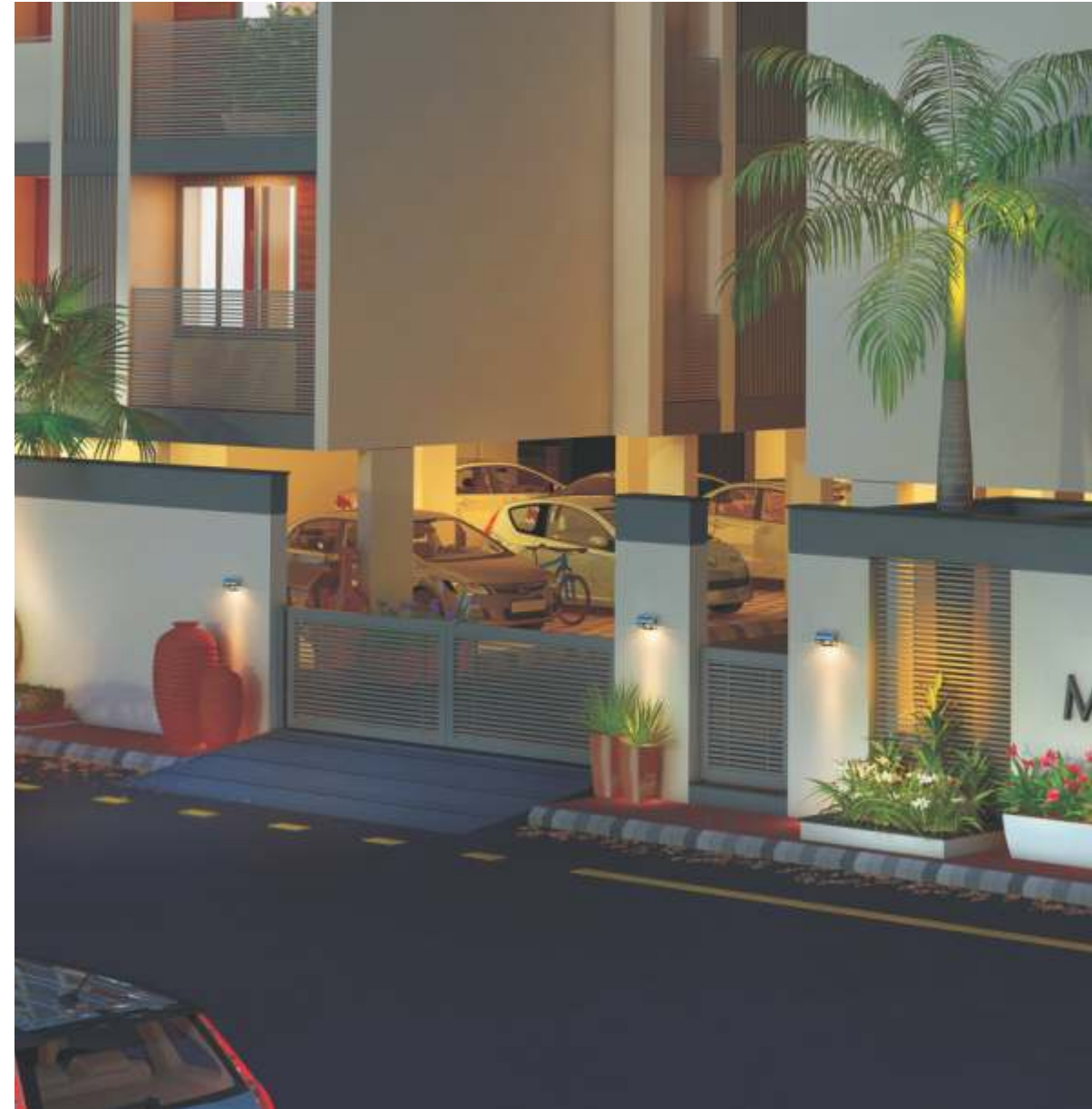
maan<sup>(Two)</sup>

a line above luxury

# maan<sub>(Two)</sub>

Maan (two) another derivation of the dignified principles that Maan Infrastructure holds. We have constructed Maan (two) in a very dignified manner, so that it will add stars to your lifestyle. Live the life that will add to your reputation to your standard of living and fulfill your admiration. The homes at Maan (two) are designed by keeping all your luxury needs in the mind after all its happiness and comfort the matters. Every moment here will be an extraordinary one as well as life-sized.

Live in your dream luxury home.







# Admiration

A dwelling, that meets up your desires.

Your home here, has an admiration that you dream of with an inimitable ambience. With a well-planned architecture, it is designed uniquely. Essentials such as furnishing space, flooring and others have been considered as primacy. We have materialized dominions at Maan 2 by bringing together all the necessities in order to protract your desire for dynamic living.



*As admiration is always created by brilliance*

# Reputation

A delight, that adds essence of class to your reputation.

As much as it is about dwelling, it is also about pleasure too. Everyone wants to feel good at the place one lives in, as a part of happiness. Have an essence of extraordinary standard of living that you have never experienced before or would desire to experience. You wish to live in the home your dream of and yes fulfilling all your wishes Maan (two) is the thing worthy.



*As a good reputation is more valuable than wealth*





MAAN (TWO)







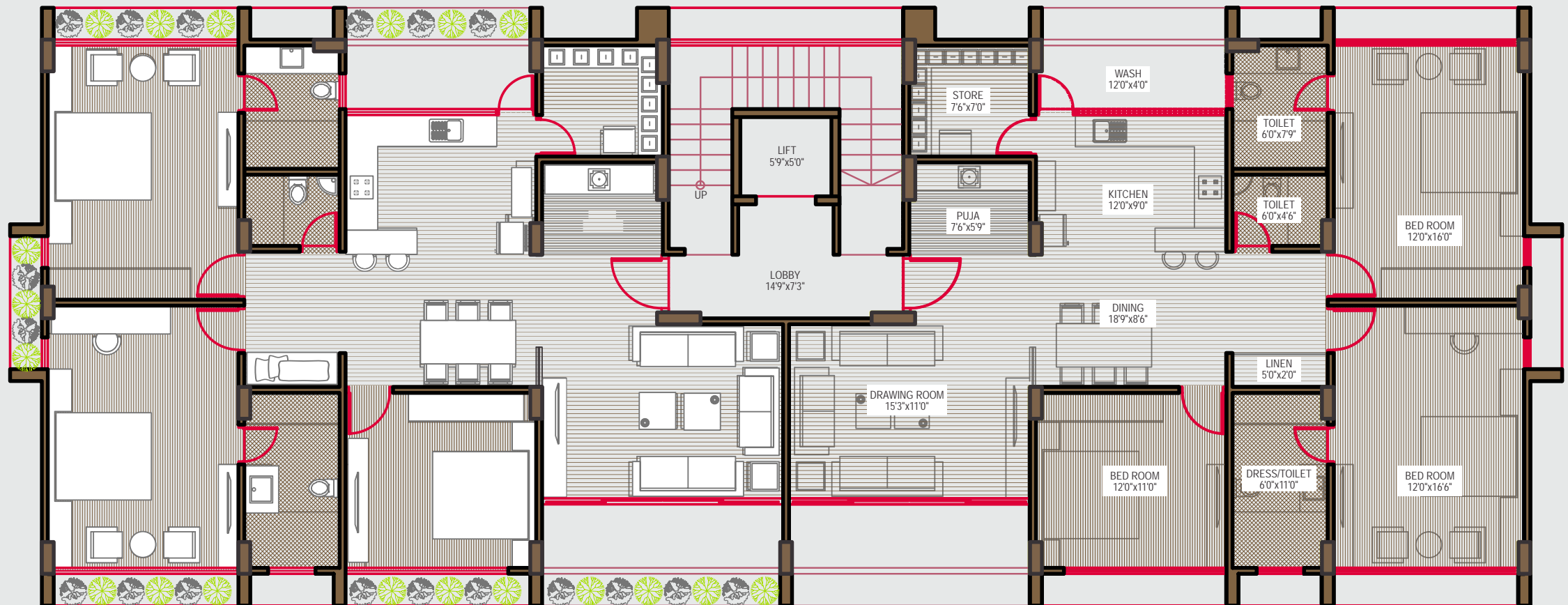
# Harmony

Observe respectable trust in order to develop harmony.

We have developed an art of constructing homes with a strong presence of our work. Maan (two), where you and your family will have a feeling of lavishness that you would have dreamt of or have never experienced before. Have faith in our verse we won't let your aspiration die. Life at Maan 2 will be harmonious and something up to and above your expectation.

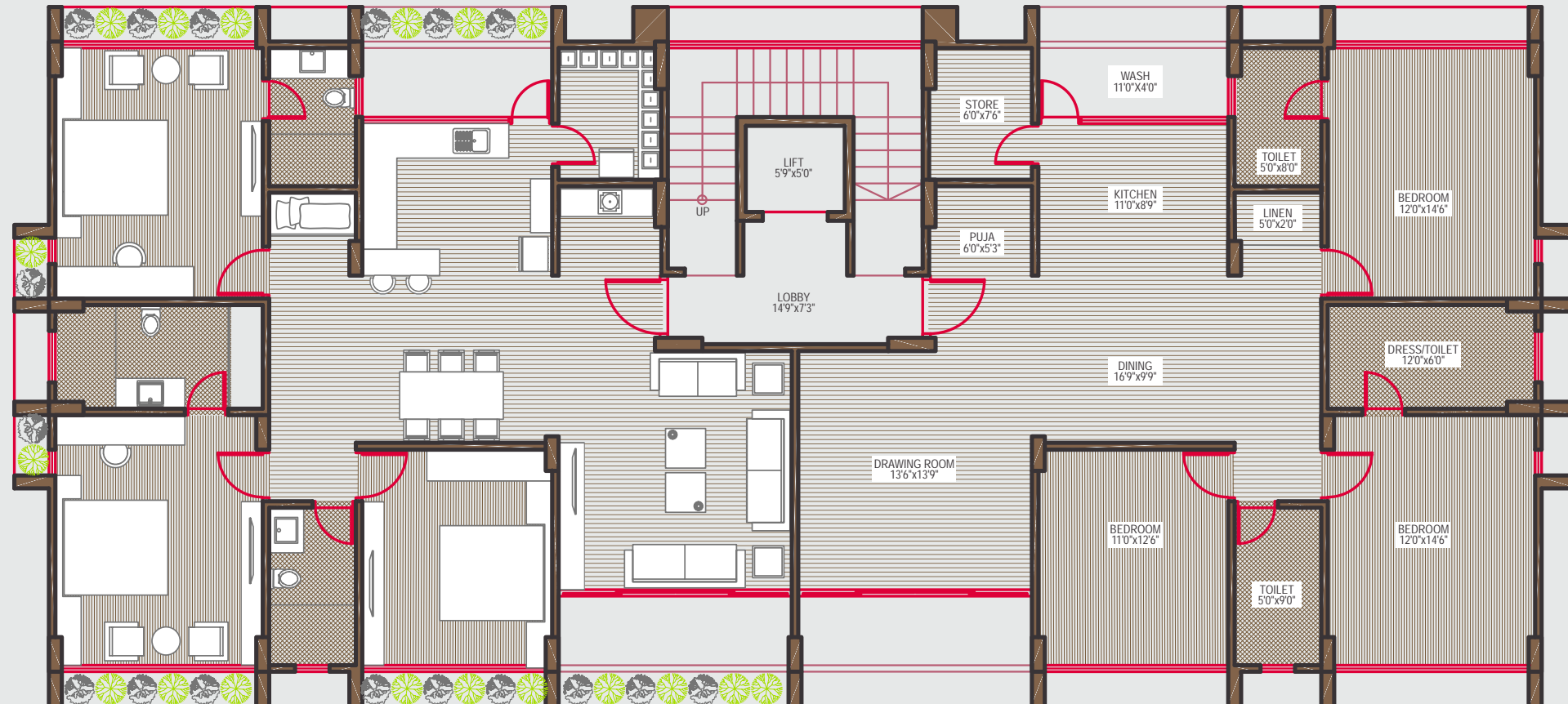
*As Harmony leads to pleasure and peace*

# Block - A



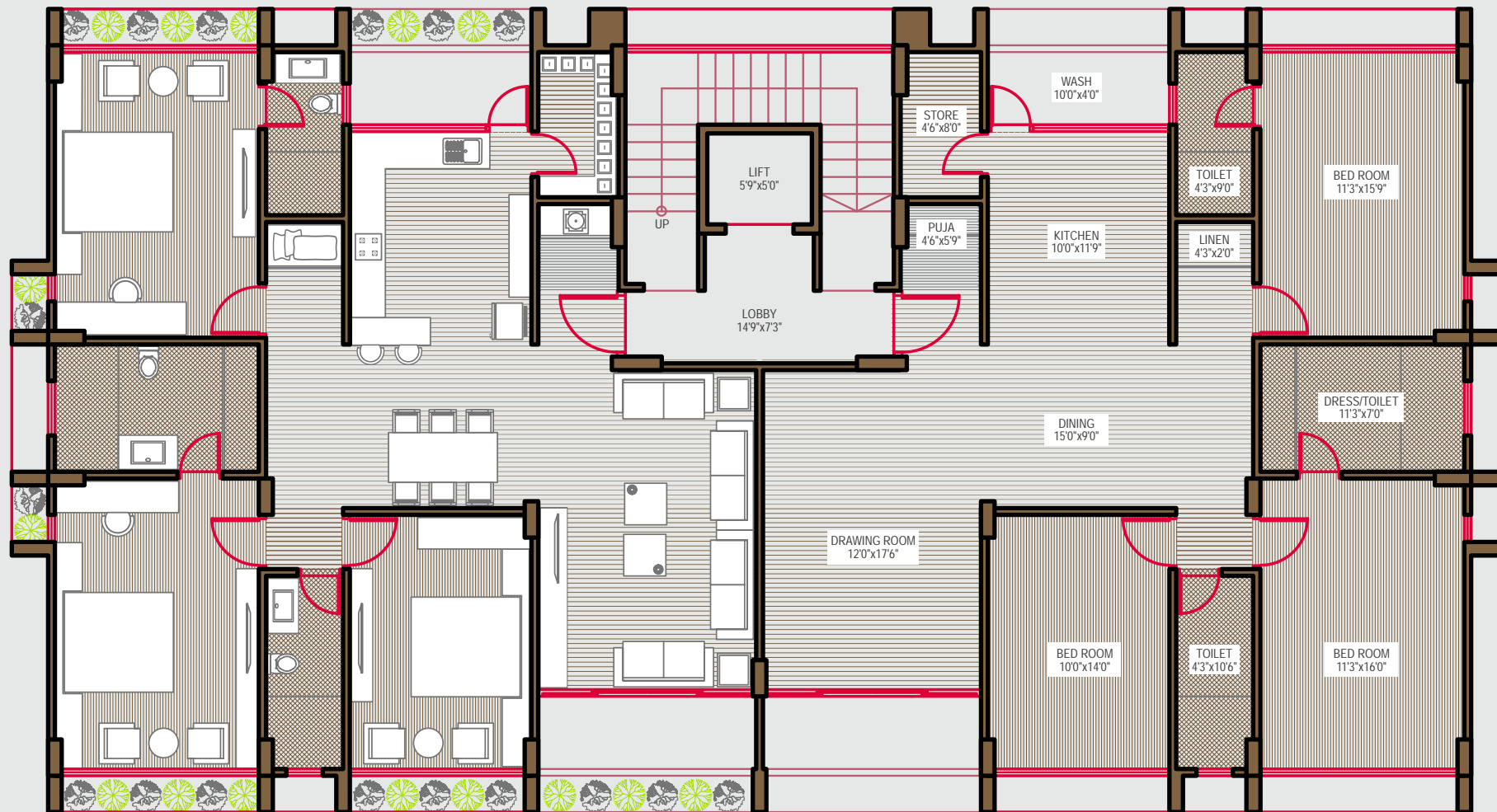
3 BHK Apartment  
Sq: 2358

# Block - B



3 BHK Apartment  
Sq: 2358

# Block - C



3 BHK Apartment  
Sq: 2358



# Basement Parking



Ground Floor - Block A - Sq.Ft. 2358  
 Ground Floor - Block B - Sq.Ft. 2358  
 Ground Floor - Block C - Sq.Ft. 2358

# Ground Floor Parking



# Silent Features

- STRUCTURE : Earthquake Resistant Structure design
- WALLS : External walls with Sand face plaster & Internal putty finish walls ready to paint
- DOORS & WINDOWS : Veneer finish main door, Imported /Malaysian/ teak wood frames and Flush doors Anodized Aluminum Sliding Windows
- FLOORING : Premium Brand Vitrified tiles flooring
- KITCHEN : Granite platform kitchen (Table top- Granite), Designer tiles upto Lintel level, Stone racks in Store room, Provision for Water Purifier, Gas Line, microwave, oven and Refrigerator
- BATHROOM : Designer bathroom concepts with premium range of Vitrified tiles | Premium CP fittings & Sanitary ware and accessories | Provision for Hot water Geyser in all bathrooms & Gas Geyser in one Bathroom
- SECURITY : Certified Electrical wiring with High End Electrical Switches | DTH & FTTH ready infrastructure | Security Cabin



# Comfort

- Pneumatic Pressure Pump System
- Certified Anti Termite Treatment
- Attractive Gate & Paved Walkways
- Light Guided Parking Area
- Private Bore-well, U.G & O.H Water Tank Admitted
- Allotted Parking Facility in Basement & Ground
- Manual Security
- Locked Foyer & Passages



# Key Plan



Site Location :



## maan (Two)

Hariom Flat, Mehta Park,  
Ambawadi, Ahmedabad.

Inquiry: +91 9924 182820

[www.maaninfra.com](http://www.maaninfra.com)

[info@maaninfra.com](mailto:info@maaninfra.com)

Map: 23.017123, 72.553770

+91 9173 005150

Developers :  
MAAN INFRASTRUCTURE  
MAAN HEIGHTS LLP

Structural Engineer :  
DEE DESIGN

Architect :  
NEVIL PATEL (UGHREJA)

Legal Advisor :  
MAULIK SHETH

Disclaimer: While every effort has been made to ensure the accuracy of this brochure for illustrative purpose, it is not intended to provide any legal value. The Architect and the Developer reserve all the rights to make amendments in terms of design and specifications in the interest of the development, without prior notice or obligation.

